

Product Description

Rho family pan antibody (Cdc42+Rac1+RhoA)

Catalog Number: 21035

Gene Symbol: CDC42+RAC1+RHOA

Description: Anti-Cdc42+Rac1+RhoA Rabbit Polyclonal Antibody

Background: Small GTPases are a super-family of cellular signaling regulators. The Rho sub-family GTPases regulate cell motility, cell division, and gene transcription.

Immunogen: A synthetic peptide from the N-terminal region common among Cdc42, Rac1, and RhoA.

Tested Applications: ELISA, WB, IHC

Recommended Dilutions:

ELISA 1:100-1:5000

WB 1:100-1:1000

IHC 1:100-1:1000

Concentration: 0.2 mg/ml

Clonality: Polyclonal

Purity: Purified from serum

Format: Liquid

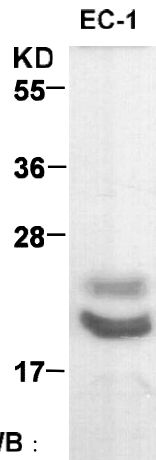
Preservative: No

Constituents: PBS (without Mg²⁺ and Ca²⁺), pH 7.4, 150 mM NaCl, 50% glycerol

Species Reactivity: Rho family pan antibody recognizes Cdc42, Rac1, and RhoA from vertebrates.

Storage Conditions: Store at -20°C. Avoid freeze / thaw cycles

Western blot:



anti-cdc42/Rac/Rho pAb

EC-1 whole-cell lysate was used for Western blot with the polyclonal Rho family pan antibody (Cat. # 21035).

FOR RESEARCH USE ONLY. NOT FOR DIAGNOSTIC APPLICATIONS